



Your Reliable Supply  
Chain Designer  
**All Trusted Med**





**TRUSTED**  
All Trusted Medical

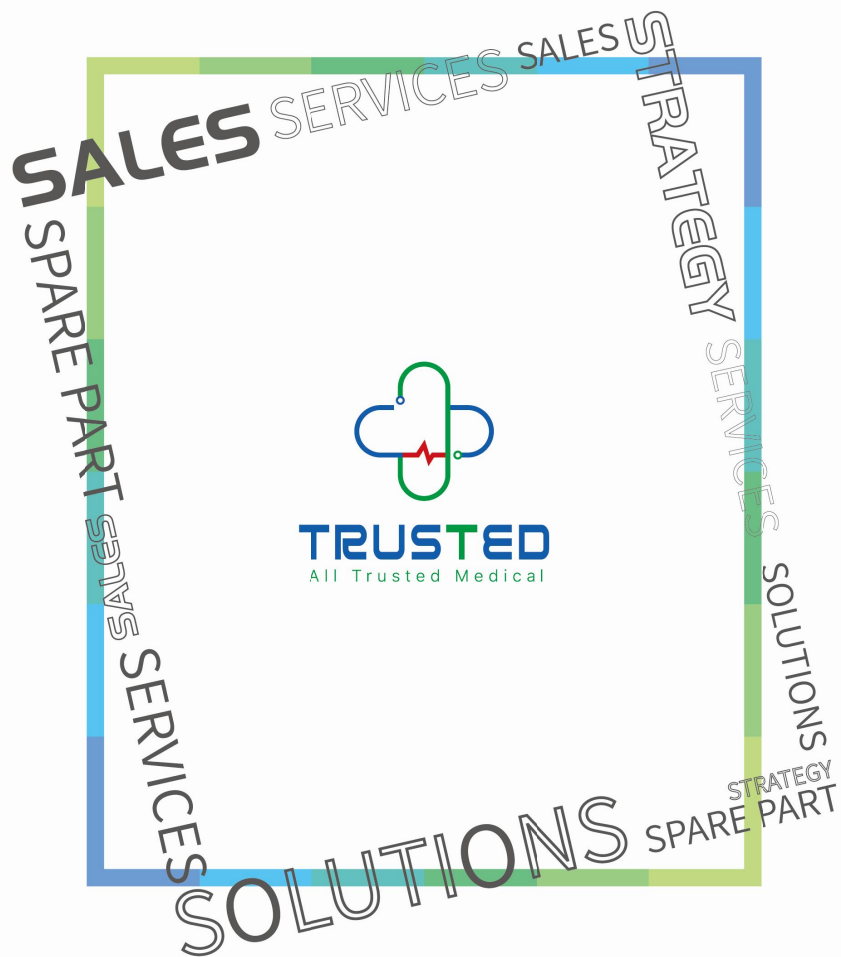
**Hazel Ip** Director

**M** + 852 5170 0678

**E** [hazel@alltrustedmed.com](mailto:hazel@alltrustedmed.com)

**N** All Trusted Medical Ltd

**A** 9A-501, Wutongdao Park, Ban'an District  
Shenzhen, China



**MEDICAL SS SHOP**

Unlocking growth in developing enterprises



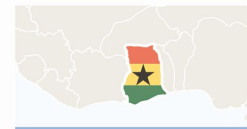
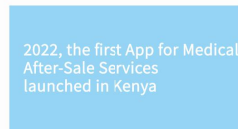
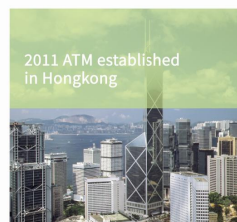
# All Trusted Medical

Your Reliable Supply Chain Designer

“scan me”



One-stop medical solution service with rich African localization experience to provide partners with consulting marketing, logistics customs clearance after-sales and human resources



## All Trusted Medical Team



## Numbers We made

1<sup>st</sup> Mobile Clinic in Kenya



1<sup>st</sup> App for Medical After-Sales Service in Africa

3 Overseas facilities in Kenya, Nigeria, Ghana



14 years of Dedication in Africa Continent

10+ NGO we are contributing to



20+ International Organizations cooperating

40+ Countries served by All Trusted Med solutions

100+ International NGO projects

800+ Supply Chain Partners



1000+ units of Mindray product installed



# MEDICAL SS SHOP

## Solutions

Health on Wheels – Mobile Healthcare	◀ 05
Invest in Dialysis Success-Dialysis Solutions	◀ 07
Comprehensive Laboratory Setup Combo	◀ 09
One Stop Hospital Setup	◀ 10

## Spare part

Compatible International Brands	◀ 11
Spare Parts, Reagents, Accessories and Consumables	

## Services

Africare :After-sales Service APP for Medical Equipment	◀ 12
Tailored Excellence, Unmatched Quality: OEM Redefined	
Empowering local talent for sustainable growth and success: Training	◀ 13
Crafting Connections, Creating Buzz: Localized Marketing Redefine	
Personalized Precision for Your Progress: Customized gifts solution	◀ 14

## Strategy

Global Layout	
Headquarter & Overseas branches	◀ 15
Distribution Network	
Global Exhibition Participating	

## Sales

laboratory	◀ 17
Imaging Department	◀ 21
Endoscopy System	◀ 24
Hemodialysis System	◀ 24
Ophthalmic Equipment	◀ 25
Dental Unit	◀ 26
ENT	◀ 27
Maternal & Neonatal Healthcare	◀ 28
Operating Room	◀ 29
ICU	◀ 31
Outpatient Equipment	◀ 35
CSSD	◀ 36
Medical Furniture	◀ 36
Kitchen	◀ 41
Hospital laundry	◀ 41
Hospital gas supply system	◀ 41
Teaching Aids	◀ 42



# Solutions

## Invest in Dialysis Success

Empowering Health Maximizing Returns

### "Your Path to Dialysis Success"

Expert Solution Consultancy  
Tailored Solutions for Excellence  
Seamless Procurement Process  
Efficient Logistics and Clearance  
Financial Guidance for Growth



## Dialysis Proposal Process



### Advanced Market Survey

Conduct an in-depth analysis of the dialysis market helps identify target markets and refine your business strategy



### Investment in Fixed Assets

Determine the required infrastructure and equipment for your dialysis center  
Invest in state-of-the-art technology to provide high-quality care



### Medical Staff Configuration

Develop a comprehensive plan for staffing your dialysis center  
Ensure a skilled and qualified team to deliver exceptional patient care



### Demand-Based Planning

Analyze the demand for dialysis services in your target market and create a detailed plan to meet those needs and service delivery



### Capital Budget and Return on Investment

Create a detailed capital budget accounting for all costs associated with setting up and operating your dialysis center  
Evaluate the return on investment



### Copy and Expand Successful Experiences

Identify, Adapt and incorporate best practices, operational models and patient-centered approaches into your own dialysis center to drive success.

## “Unleashing the Best Made-in-China Solution: Integrated Solutions from Entry Level to High-End with Optional Comprehensive OEM Services!”

### Superior Solution Made in China

delivering the best dialysis solution proudly manufactured in China  
Benefit from robust quality standards that meet or exceed global industry benchmarks

### Integrated Solutions for Every Level

comprehensive range of products integrated solutions to meet your specific requirements from basic dialysis equipment to advanced treatment systems

### Whole OEM Service Solution

Our commitment to customization extends to offering comprehensive OEM services. Ensuring the highest standards of quality and functionality

### Technical Support and Training

comprehensive technical assistance, maintenance services and training programs to ensure your staff is equipped to operate the equipment effectively and maximize its potential







# Solutions

## HEALTH ON WHEELS

### BRINGING CARE TO YOU!

#### Why All Trusted Med?

Pioneering International Standards Maker in Africa


50% Cost-Effective Supply Chain

Menu Options for Better Decisions

Empowering Africa with Tailored Solutions

#### What does Health-on-wheels could do?

- 1 Healthcare access for underserved communities
- 2 Convenient medical services at your doorstep
- 3 Flexibility to adapt and respond to changing needs
- 4 Early detection through preventive care services
- 5 Affordable healthcare with lower overhead costs
- 6 Empowering community engagement in health
- 7 Targeted outreach to specific populations
- 8 Rapid response in emergencies and disasters



1 110m<sup>2</sup> Extensible Shelter Hospital



2 Mobile Operation Room



3 Mobile Biological Laboratory



4 Mobile Functional Truck: Water/Electricity Support



1 Mobile Biological Laboratory



2 Health Checkup Car



3 Ambulance

When you choose us, you not only get top-notch products and services but also a reliable partner dedicated to your success every step of the way



**Excellence Beyond Purchase:**  
ment to your satisfaction doesn't end when you make a purchase. We go the extra mile to ensure your continued happiness and success.



**Streamlined Logistics:**  
Say goodbye to delays and complications. Our efficient logistics ensure your orders are delivered promptly and seamlessly.



**Flawless Installation & Empowering Training:**  
we empower you with comprehensive training during installation, equipping you with the skills and confidence to get the most out of our offerings.

Customizable menu with all you could choose

HEALTH ON WHEELS		TRUSTED
BRINGING CARE TO YOU!		
Company Name	Extension of Service	
Contact Person	Email	
Model		
Truck Size (Choose one for African Continent)		
12m	14m	16m
Extendable Shelter Hospital		
Basic Package	Upgrade to the other Package	
Optional parts	40	800
Additional equipment		
Diagnostic Unit		
Basic Package	Upgrade to the other Package	
Optional equipment	1.5m	2.0m
Control unit	1.5m	2.0m
Special Functional Vehicle		
Basic Package	Upgrade to the other Package	
Optional equipment	Basic	Advanced
Additional Functions:		

#### Optional Functional Module:CT/Xray/Lab/Operation/Emergency Power Supply/Water Supply etc



# Solutions



Entry Level Laboratory Setup

Starts from \$9500

One Stop Hospital Setup

1 EC38 Auto Hematology Analyzer

2 AS120 Auto Chemistry Analyzer

3 M4 POCT Chemistry Analyzer

4 XI-921 Electrolyte Analyzer

5 1160 Immunofluorescence Quantitative Analyzer

Chemiluminescence Analyzer

1/ Microscope

2/ Shaker

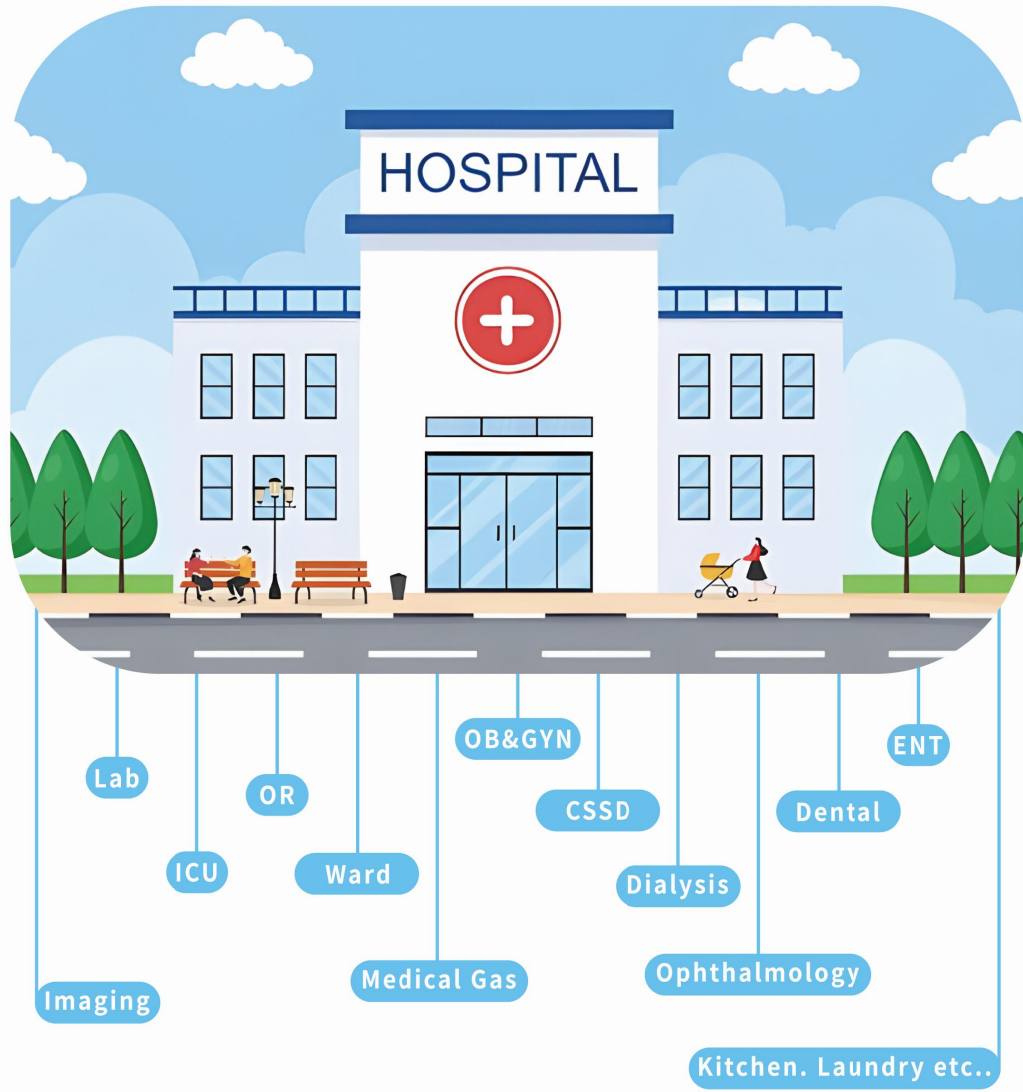
3/ Roller Mixer

4/ Centrifuge

5/ Pipette

6/ Glucose Monitor

7/ HB Monitor



# Spare Part

Large range of spare parts  
compatible with Leading brands

**mindray**  
healthcare within reach

**EDAN**

**Neusoft** Medical Systems

**AEOMED** **COMEN**

**SonoScape**

**DYMIND**

**Snibe**

**VINNO**

**BIOELAB**

## Spare Parts, Reagents, Accessories and Consumables

All Trusted Medical offers a wide range of medical spare parts reagents, accessories and consumables for all types of new or used medical equipment. If you're unable to find the reference you're looking for, do not hesitate to contact our team for further enquiries



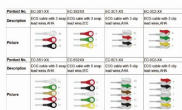
Parts for In Vitro Diagnostic



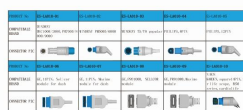
Parts for Ventilator and Anesthesia



Part for Radiology



ECG Accessories



Patient Monitor Accessories



Dialysis Sets



Compatible Reagent



Cuvette



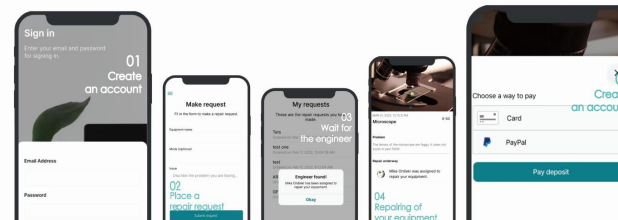
Printing Paper

Spare part

# Service

Adding the Extra to Ordinary -  
Beyond Services, We Deliver Value

Your Vision, Our Mission -  
Adding the Extra to Ordinary Every Step of the Way  
When It Comes to Value, We're Not Just Providers  
– We're Pioneers



Africare was born out of the need to link users to expert biomedical engineering solutions support original & genuine parts servicing and maintenance of machinery and equipment sold by All Trusted Medical Co. Limited in Africa and globally

**Africare**

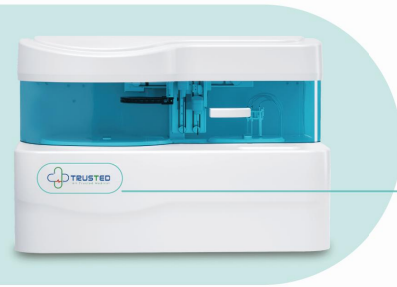
After-sales Service Application for your Medical Equipment <https://africare.health>




Services




OEM/ODM





Embark on a Journey of Innovation with Our Unmatched OEM/ODM Services  
We craft solutions tailored to your unique vision

Our OEM/ODM services are the epitome of innovation seamlessly blending original design brilliance with precision manufacturing expertise



Personalized Precision for Your Progress: Gifts as Exceptional as Your Manufacturing  
we provide comprehensive Customized gifts under your brand, your logo, your choice, your ideas



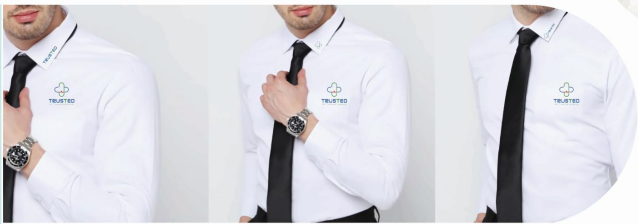
Marketing



Crafting Connections, Creating Buzz -  
Our localized marketing events  
redefine how manufacturers and  
distributors engage their audience  
From workshops that educate to  
conferences that influence –  
your brand's journey  
to excellence starts here

Training

Empowering local talent for sustainable growth and success. We assist manufacturers to do overseas training



Also logistic,custom clearance..  
and many more  
Together, we achieve more –  
your success is our priority

Services

Services

# Strategy

## Vision

Ploughing deeply in Africa  
Laying out the world  
Be a gift to all

## Mission

Sublime the image of Made in China  
raising the level of medical care  
in developing area

## Global Layout

Headquarter  
Shenzhen/Hong Kong



Overseas branches



## Global Exhibition Participating



## Distribution Network



## NGO Practising



- 17/ laboratory
- 21/ Imaging Department
- 24/ Endoscopy System
- 24/ Hemodialysis System
- 25/ Ophthalmic Equipment
- 26/ Dental Unit
- 27/ ENT
- 28/ Maternal & Neonatal Healthcare
- 29/ Operating Room
- 31/ ICU
- 35/ Outpatient Equipment
- 36/ CSSD
- 36/ Medical Furniture
- 41/ Kitchen
- 41/ Hospital laundry
- 41/ Hospital gas supply system
- 42/ Teaching Aids

# Sales

In-vitro Diagnostic Analyzer

3-Part Hematology Analyzer



DH36 EC38

5-Part Hematology Analyzer



CH8500 DH76

Dry Chemistry Analyzer



M4

Automatic Chemistry Analyzer



AS-120

Semi-auto Chemistry Analyzer



ES101C

Urine Analyzer



URIT-50

Immunofluorescence Analyzer



AS-160



1100



1160

Chemiluminescence Analyzer



AS-280



i 800



i 1000

Coagulation Analyzer



CA54



MDC3500

Blood Gas Analyzer



i15



PT1000

Microplate Reader & Washer



KC-100

ESR Analyzer



XC-A30

Electrolyte Analyzer



- K+ / Na+ / Cl
- K+ / Na+ / Cl / Li+
- K+ / Na+ / Cl / CO2
- K+ / Na+ / Cl / Ca2+ / pH
- K+ / Na+ / Cl / Ca2+ / pH / CO2

XI-921 Series

Molecular

Portable Molecular Workstation



iPonatic III

Quantitative Thermal Cycler (PCR)



ZIP-960

Nucleic Acid Extraction System



EXM6000

Medical & Pharmacy Refrigerator



YC-395L



HYC-940

Combined Refrigerator & Freezer



YCD-FL300



laboratory

Blood Bank Refrigerator



HXC-429

Blood / Fluid Warming Cabinet



HYR-111

Biological Safety Cabinet



HR1200-IIA2

Biomedical Freezer (-25/-30/-40/-60/-86/-150°C)



DW-YL450



DW-FL270

Constant Temperature Incubator



HFP-80/  
HZP-168

Transport Refrigerator



HZY-8ZA



BW25-36A

Constant Climate Chamber



HZS-60

Clean Bench / Laminar Flow



HCB-900V/1300V



BBS-H1100  
/H1500

CO2 Incubator



HCP-80/  
168/258

Centrifuge



D1524



DM0412

Electronic Balance



0.1mg Series



0.1g Series

Pipettes / Filter Tips



Single Channel



Filter Tips



Pipette Stand



Filter Tips

Microscope



XS-208



N-126



BM2000

Shaker



O180-Pro



O330-Pro

Mixers & Rotators



MX-S



MX-RD-PRO



MX-T6

Dry & Water Bath



HB60-S

Hotplate Stirrer



MS-H-S



MS-HS4U-S4

Spectrophotometer



SP-V1100

laboratory

laboratory

laboratory

MRI (1.5T / 0.35T / 0.5T)



NeuMR 1.5T

❑ Magnetic field strength	1.5T
❑ Max. gradient amplitude (mT/m)	35
❑ MRI Type	Open
❑ Gradient slew rate (mT/m/mcs)	136
❑ Type of magnet	Permanent
❑ Flat Panel Detector	17 × 17 inch

CT (64Slices)



NeuViz 64 In / En CT

❑ Focal spot sizes	0.6x1.2mm / 1.1x1.2mm
❑ Method of Cooling	Oil to air
❑ Powering Rate	50KW
❑ kV range	80,100,120,140KV
❑ mA range	30-420mA
❑ Detector rows	32rows-64slices

Injector



CT Dual

Digital Mammography



DM156

Technical Configuration

Items / Model	DM156
❑ Output Power	5kW
❑ Frequency	40KHZ
❑ Output Voltage	20 - 35kV
❑ Cathodic Current	70-140mA / 20-30mA
❑ Tube Focus	0.1mm/1.3mm
❑ SID	650mm
❑ Flat Panel Detector	10 × 12 inch

Fixed Digital X-ray

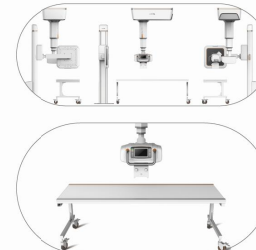


MTP50-B

Technical Configuration

Items / Model	SONTU300-Mars	SONTU100-RAD	MTP50-B
❑ Output Power	50kW/50KHz	50kW/50KHz	50kW/60KHz
❑ KV Range	40~150kV		
❑ mA Range	100~630mA		100~650mA
❑ Tube Focus	0.6mm/1.2mm		
❑ Flat Panel Detector	17 × 17 inch	14 × 17 inch	17 × 17 inch

Ceiling Digital X-ray



SONTU-Polaris 50C

Technical Configuration

Items / Model	SONTU-Polaris 50C
❑ Output Power	50kW/25KHz
❑ KV Range	40~150kV
❑ mA Range	100~630mA
❑ Tube Focus	0.6mm/1.2mm
❑ Flat Panel Detector	17 × 17 inch

Mobile Digital X-ray

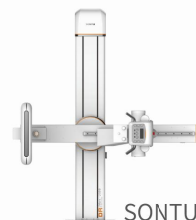


DP326

Technical Configuration

Items / Model	DP326
❑ Output Power	32kW/50KHz
❑ KV Range	40~150kV
❑ mA Range	50~400mA
❑ Tube Focus	0.6mm/1.2mm
❑ Flat Panel Detector	14 × 17 inch

U-ARM Digital X-ray



SONTU-P50E



DTP580B

Technical Configuration

Items / Model	SONTU-P50E	DTP580B
❑ Out:put Power	50kW/50KHz	50kW/60KHz
❑ KV Range	40~150kV	
❑ mA Range	100~630mA	100~650mA
❑ Tube Focus	0.6mm/1.2mm	
❑ Flat Panel Detector	17 × 17 inch	

Mobile C-arm System



PLX7000/PLX118F Series

Technical Configuration

Items / Model	PLX7000A	PLX7000B	PLX7000C	PLX118F
❑ Power/Frequency	6kW/60KHz	12kW/60KHz	16kW/60KHz	5kW/110KHz
❑ Radiography Voltage	40kv~125kv			
❑ Radiography Current	120mA	160mA	200mA	100mA
❑ Fluoroscopy Voltage	40kv-120kv			
❑ Fluoroscopy Current	0.3mA~8mA	0.3mA~30mA		
❑ Tube Focus	0.3mm/0.6mm			0.3/1.5mm
❑ Image Intensifier	TOSHIBA (9")			Flat Panel

Imaging Department

Portable Color  
Ultrasound



M5



E2



V5

X-ray Film Printer



Film Viewer



Trolley Color Ultrasound



Viv20



X1



P9

Wired / Wireless Flat  
Panel Detector



14\*17 /  
17\*17

Lead Apron



Handheld ultrasound



Mx9



Mx3

Transducer & Needle Guide



4D Probe



Cardiac  
Probe



Convex  
Probe



Transvaginal  
Probe



Micro-convex  
Probe



Linear  
Probe



Needle  
Guide  
(Linear)



Needle  
Guide  
(Convex)



Needle  
Guide  
(Transvaginal)

Medical Door



Imaging Department

Endoscopy System

Endoscopy  
System



Video Endoscope



Gastroscope  
Colonoscope  
Bronchoscope

Endoscope  
Reprocessor



Endoscope  
Storage Cabinet



Endoscopic Accessories



Biopsy  
Forceps



Grasping  
Forceps



Cleaning  
Brush



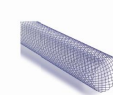
Intestinal  
Stent



Biliary  
Drainage  
Tube



Electrosurgical  
Snare



Biliary  
Stent



Esophageal  
Stent

Surgical Endoscope



- Laparoscope
- Enterology
- ENT: Sinuscope
- Orthopedics: Arthroscope
- Gynecology: Resectoscope / Hysteroscope
- Urology: Cystoscope / Resectoscope / Lithotriptoscope / Ureteroscope / Nephroscope

Hemodialysis System



Dialysis  
Machine



RO Water Treatment System



Hemodialysis Chair



Perfusers



Dialyzer



Blood Tube Set



Fistula Needle



Dialysis Powder



Citric Acid  
Disinfectant

Endoscopy System

Hemodialysis System



Ophthalmic Unit



TCS-760

Slit Lamp



SLM-2ER



Ophthalmic AB Scan



RetiWave 1000

Auto Ref-keratometer



KR9000

Auto Lensmeter



TL6500

Phoropter



CV7600

Fundus Camera



Kestrel 3100

Near Vision Tester



NV-100

Dental Chair Unit



ZC-E300



ZC-S400

Dental Air Compressor



Dental Vacuum Suction



Dental Ultrasonic Cleaner



Dental Autoclave chamber



ZC23B 22L

Dental x-ray



Dental CBCT



Ultrasound-Scaler



PS9L

Doctor stool



Dental Handpiece



Dental X-ray Sensor



ENT Treatment Unit



ENT Treatment Unit



ENT Diagnostic Set



Laryngoscope



Ophthalmoscope



Otoscope



Pure Tone Audiometer



Mobile Soundproof Room

Name Quantity

Work table	1
Sprayers Two straight and one curve	3
Flusher	1
Attractor	1
Endoscope Pre-heater	1
Endoscopic insulation chamber	1
Drop bottle	1
Endoscopic insulation chamber	1
Central Control Touch Screen	1
Medical Cotton Can	4
12 Inches Instrument Tray	2

Name Quantity

Instrument Collection Tank	2
Otoscope	1
Spotlight	1
Led Film Viewer	1
Electric Examination Chair	1
Computer Table	1
Optional: Auxiliary chair	1
Optional: Led Headlamp	1
Optional: Water Receiver	1

Infant Incubator



YP-100AB

Transport Incubator



TI-2000

Infant Radiant Warmer



HKN-93

Video Colposcope



C3&C6

Fetal & Maternal Monitor



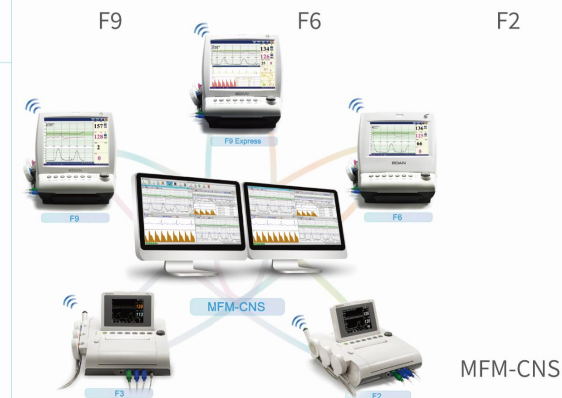
F9



F6



F2



MFM-CNS

Bilirubin Phototherapy Unit



XHZ-90L

Infant T-piece Resuscitator



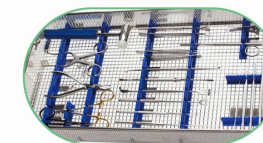
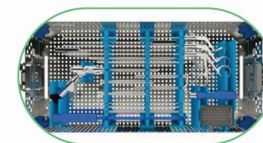
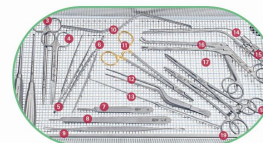
Transcutaneous Jaundice Detector



BM-100C

Baby Scale







Patient Monitor

Modular Monitor



elite V8 / V6 / V5

Compact Monitor



X8 / X10 / X12

Vital Sign Monitor



iM3



M3

Transport Monitor



iM20

ECG

3-Channel ECG



iM60 / 70 / 80



SE-300



ECG300G

6-Channel ECG



M12



E6



SE-601C

12-Channel ECG



SE-12 Express



SE-12



CM-1200

ECG Holter



SE-2012



SE-2003

Defibrillator

Defibrillator Monitor



S8



S5



D6

AED Defibrillator



i3/i5



AED7000



D1



DE15



DP12

SE-1515

Pump

Syringe Pump



SYS-50



Semi-1



SP50

Infusion Pump



SYS-70



Semi-2



VP50

Vein Finder



VT-30

QV-600

Video Laryngoscope



VL3

iS3

Feeding Pump



EP-60

First-aid Packet



Diathermy Machine



DGD-300B-2 Multi-function



DGD 300C-1

Anesthesia Machine



AX-700/800



Aeon8300A



Aeon7200

Ventilator

Ventilator Machine



VG70



iHope RV / RS



V3

Neonatal Ventilator



NV8

Transport  
Emergency Ventilator



T5



T7

High Flow Heated  
Respiratory Humidifier



HF8

CPAP / APAP / BIPAP



Resplus

Oxygen Concentrator



V Series



H Series

Blood Warmer



FT2800



FT1800

Nebulizer



N100



LT-700

Electronic Blood Pressure Monitor



P50



P30

Sphygmomanometer



BK2003



BK2001



BK1016B

Handheld Pulse Oximeter



PC100S



F20



F50

Stethoscope



3004



3006

Hospital Head Unit



Plasma Sterilizer  
(H2O2 & Ethylene Oxide)



PS-100 /  
XG2.C-130



LK-MJG  
100

Vertical Steam Autoclave (35/50/75/100L)



S-LD  
Series



ZC-S400

Portable Steam Sterilizer (18/24L)



YX-HD Series



TM-XBJ Series



TM-XDDV Series

Horizontal Steam Autoclave



WS-YDB  
Series

Medical Furniture

Stand



E-6

Stretcher



E-6

Foldable Stretcher



K-10

Steel Stainless Bowl



K-8

Medical History



K-6

Screen



K-5



Bedside Table



G-1

Movable-Hydraulic-Over-Bed-Table



F-32

Steel Filing Cabinet



G-22

Case Folder



E-16

Emergency Trolley



E-18

Stainless Steel Surgical Instrument Pallet Truck



E-40

Medicine Trolley



E-26-2

Medical Trolley



MT-01



MT-03

Stainless Steel Medicine Cabinet



G-29

Foldable-accompany-chair



F-44-2

Infusion Chair



F5

Waiting Chair



F-7

Manual Wheelchair



117-X

Nurse Chair



F-12

Examination Bed



C-1



C-9-1

Baby Crib



D-3



D-2



D-4

### Transfer Stretcher

#### E-1

Size:3650\*640\*640/970mm  
Using 6 inch universal control casters with guide wheels  
The backrest of the bed can be folded up at an angle of  $0 \sim 60^\circ \pm 5^\circ$   
Both frames can adjust the lifting height: 640-970mm



### Stretcher Trolley

#### E-2

Size: 2130(L)\*810(W)\*630/930(H)mm  
High density mattress (thickness 8 cm)  
IV pole and belts  
Oxygen cylinder holder and storage  
Weight capacity:250kg



#### E-4

Height adjusted from 585mm-885mm by Steel crank, fold  
Castor 4pcs Dia.150mm castor, central locking system  
Adjustment stainless steel IV pole  
Collapsible side rail/Oxygen holder  
Mattress:1800\*450\*20mm



### Children Bed

#### R-5A

Size: 2100\*970\*500mm  
Function: Back rest  $0-70^\circ$ , knee rest  $0-40^\circ$   
The static load of the bed body is more than 400kg  
Side rail: Full length side rail with columns  
The distance of columns less than 60mm



### Five Function Electric Bed

#### WRA II A

Size:2150\*1040\*480/880 mm  
Mattress platform: 1950\*900mm  
With Cardica chair position  
Four IV pole holders on four corners  
Four drainage hooks, two at each side  
Max loading weight: 250kgs



### Three Function Electric Bed (Jiechang Motor)

#### WRA III(A)

Size:2150\*1040\*460/760  $\pm 20$ mm  
4pcs 125mm castors with single locking  
Electric and Manual CPR  
Guardrail: 4PCS ASB side rail  
Standard configuration: 4 infusion holders  
4 drainage hooks on both sides



### Three Function Manual Bed

#### A-3

Size:2190\*990\*460/760 mm  
Four Pcs of Dia.125 Twin wheels with single locking system  
Four IV pole holders on four corners  
With ABS crank to operate function  
Four drainage hooks, two at each side  
Max loading weight: 250kgs



### Two Function Manual Bed

#### B-12

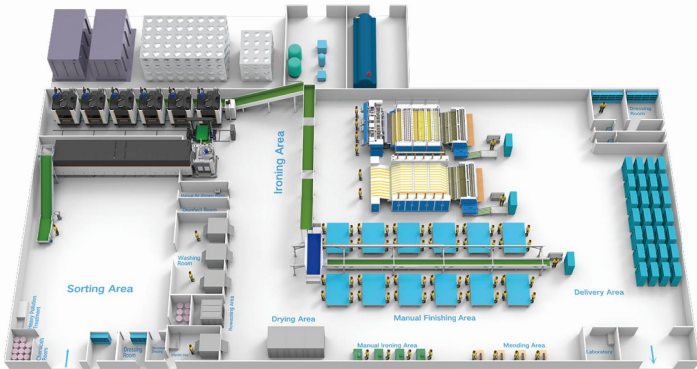
Overall Length: 2150mm  
Overall width: 980mm  
Height (fixed): 500mm  
Bed platform: 1950\*900mm  
Back-rest:  $0-70^\circ (\pm 5^\circ)$   
Knee-rest:  $0-35^\circ (\pm 5^\circ)$   
Safe working load: 250kgs



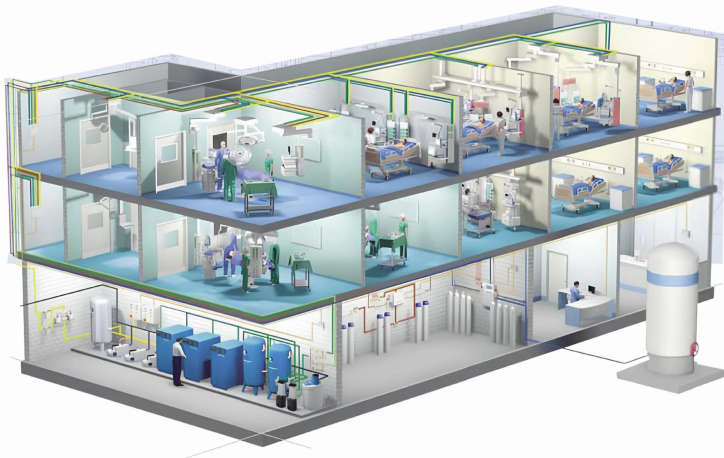
Kitchen



Hospital Laundry



Hospital Gas Supply System



Teaching Aids

Urinary System Model



Embryo Development



Eyeball Mode



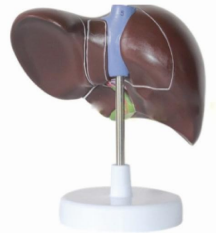
Lung Model



Stomach



Liver Mode



Female And Male Genital Organ



Heart Model



Treaning Doll



Skull



Skeleton Model

